

# BASIC PARAMETERS OF TOORS GUARDY

Dear customer,

From 11.7. 2016, small technical changes of the door GUARDY EXT will take place. They concern especially the technical parameters of the frame. The door ordered after 11.7. will have width and height of the frame equal to width and height of the opening. The requirement for the door side room is reduced from 100 mm to 95 mm..

To facilitate the orientation in technical parameters of the doors of the series GUARDY, you will find "Basic parameters of TOORS GUARDY" in the enclosure. In addition to it, the enclosure includes up-dated installation drawings.

We are preparing the information concerning the renovation sets for EXT so that you can get them soon.

With kind regards

## BASIC PARAMETERS OF TOORS GUARDY:

Type of track	SL 420	SL 350	LHF-C	LHR-C	EXT
Maximum width of construction hole	5500 <sup>2*</sup>				4000 <sup>1*</sup>
Maximum height of construction hole	3 000				2 625
Minimum width of construction hole	min. 1 500. Narrower at request				1 900
Gate control in dependence on width:	Up to 5 500				<=3000
	Manual and operator - without limitation				>3000 operator
Minimum lintel without / with operator (sealing on lintel)	420/420	350/350	200/200	100/125	0-100/0-125 <sup>3*</sup>
Minimum lintel without / with operator (sealing on section)	420/420	350/350	200/200	125/160	Not applicable
Minimum door case	125	125	90	90	0 - 95 <sup>4*</sup>
Max. weight of gate wing	195				120
Maximum surface of gate wing (m <sup>2</sup> )	14				8,5 <sup>5*</sup>
Min. number of spring cycles	20 000				25 000
Transit door	yes <sup>6*</sup>				Not applicable
Max. width with door (height of threshold 25 and 220 mm)	5 000				Not applicable
Glazed aluminium sections "FVE"	yes <sup>6*</sup>				
Windows	yes <sup>6*</sup>				
Bars	According to price list				only 495, 497 <sup>7*</sup>
Number of springs	2 pcs				2 sets <sup>8*</sup>
Type of bottom sealing	Garage and industrial				Garage

1\* 2950 max. width of L profile (covering profile of renovation set)

2\* Wider dimension at request

3\* Height of set + 100 mm without operator/+125 mm with operator (refer to STP)

Example for 0 mm lintel:

Height of ceiling 2.100 = Set 2.000 + 100 without operator

Height of ceiling 2.125 = Set 2.000 + 125 with operator

4\* 95 mm and more = full location behind the hole

1 - 94 mm = partial location behind the hole

0 mm = location into tunnel

If there is asymmetrical door case, smaller door case is always considered as initial dimension.

(e.g. In case of door case 60 and 30, the gate will be produced with vertical track on each side reaching 65 mm into the hole)

5\* This data is only for orientation, is always subjected to weight of wing

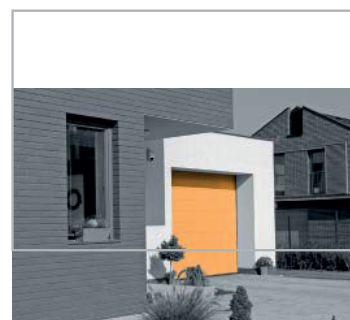
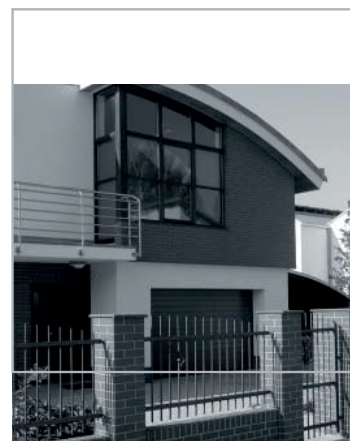
6\* Limitation is governed by current offer of panels

7\* For 495 the following height of ceiling is required: height of set + min. 125

8\* 1 set = 2 - 3 springs (duplex, triplex)

## SPECIFICATION

- from 11.07.2016
- small technical changes of the door GUARDY
- The requirement for the door side room is reduced



If you have any questions about this Product Info, please contact the TOORS company.

[www.toors.uk](http://www.toors.uk)